

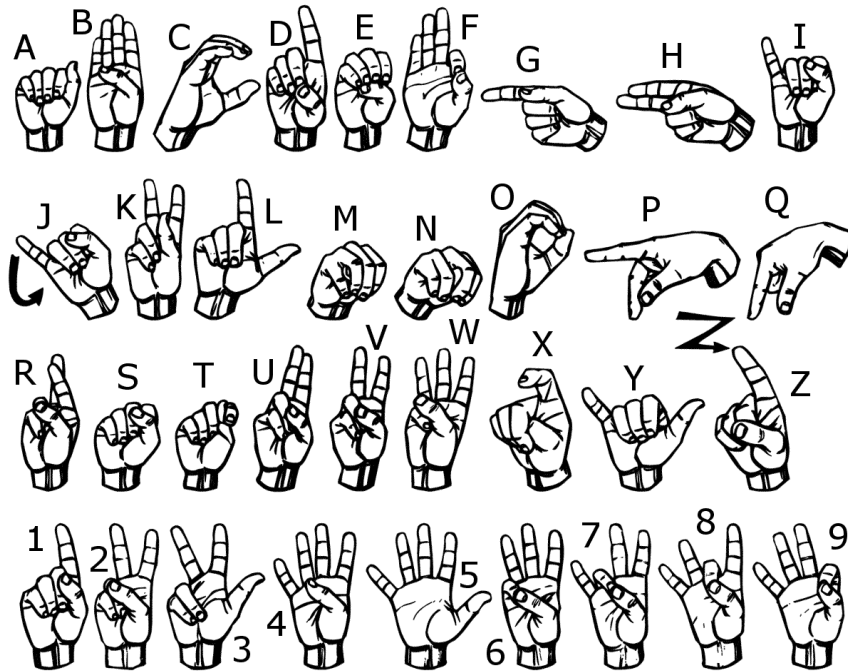


The United Methodist Committee on

## Deaf and Hard-of-Hearing Ministries

### AMERICAN SIGN LANGUAGE

American Sign Language (ASL) is the preferred language for the Deaf community, those who are Deaf, hard of hearing, and Deafblind. When one sees a capital 'D' in the word Deaf, it indicates cultural deafness within what is discussed or stated. Besides indicating hearing loss, the lower-case "d" indicates someone who is not culturally deaf. Most Deaf people DO NOT read lips. Learning the manual alphabet can help bridge the communication, at least in a small way.



For more information, go to the United Methodist Committee on Deaf and Hard of Hearing Ministries website at [www.umdeaf.org](http://www.umdeaf.org).

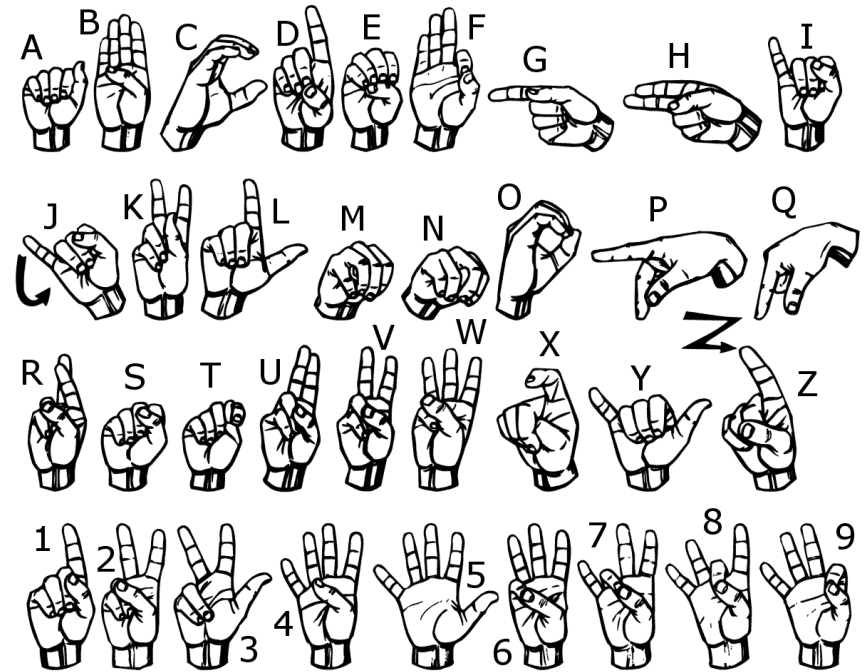


The United Methodist Committee on

## Deaf and Hard-of-Hearing Ministries

### AMERICAN SIGN LANGUAGE

American Sign Language (ASL) is the preferred language for the Deaf community, those who are Deaf, hard of hearing, and Deafblind. When one sees a capital 'D' in the word Deaf, it indicates cultural deafness within what is discussed or stated. Besides indicating hearing loss, the lower-case "d" indicates someone who is not culturally deaf. Most Deaf people DO NOT read lips. Learning the manual alphabet can help bridge the communication, at least in a small way.



For more information, go to the United Methodist Committee on Deaf and Hard of Hearing Ministries website at [www.umdeaf.org](http://www.umdeaf.org).